

SHEET 13

SHEET 13

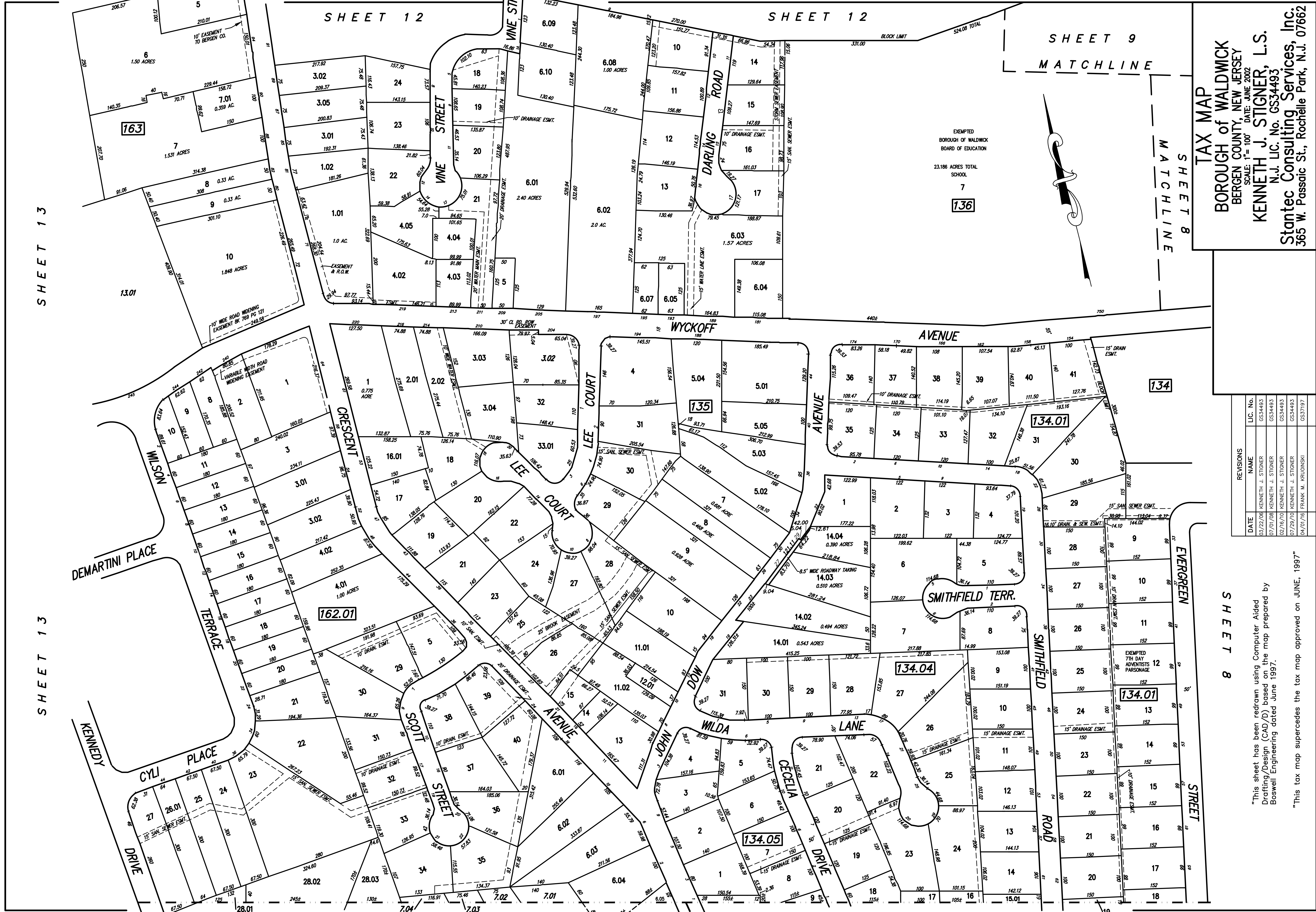
SHEET 14

SHEET 12

SHEET 12

SHEET 9
MATCHLINE

SHEET 8
MATCHLINE



EXEMPTED
BOROUGH OF WALDWICK
BOARD OF EDUCATION
23.186 ACRES TOTAL
SCHOOL
7
136

TAX MAP
BOROUGH OF WALDWICK
BERGEN COUNTY, NEW JERSEY
SCALE: 1" = 100'
DATE: JUNE 2002
KENNETH J. STIGNER, L.S.
N.J. LIC. No. GS34493
Stantec Consulting Services, Inc.
365 W. Passaic St., Rochelle Park, N.J. 07662

DATE	REVISIONS	NAME	LIC. NO.
03/22/06		KENNETH J. STIGNER	GS34493
07/01/08		KENNETH J. STIGNER	GS34493
02/16/10		KENNETH J. STIGNER	GS34493
07/29/10		KENNETH J. STIGNER	GS34493
04/01/16		FRANK M. KRLOINSKI	GS37197

"This sheet has been redrawn using Computer Aided Drafting/Design (CAD/D) based on the map prepared by Boswell Engineering dated June 1997."
"This tax map supercedes the tax map approved on JUNE, 1997"

SHEET 8

TOWNSHIP OF WYCKOFF BOROUGH OF MIDLAND PARK